

The BMA series are snap-on coupling miniature RF coaxial connectors which are developed and manufactured according to the specifications of IEC 1169-33. They are especially designed for blind mate applications in low power microwave communication system (such as connection with back-planes and links between mother card and daughter cards) and widely used in the fields of military and civil data microwave communication.

TECHNICAL CHARACTERISTICS

Environmental

Temperature range	-65~+155°C
-------------------	------------

Electrical Characteristics

Characteristic impedance	50Ω
Working voltage	250V
Frequency range	0-18GHz
Contact resistance	Center contact: ≤3mΩ, Outer contact: ≤2mΩ
Dielectric withstanding voltage	750V
Insulation resistance	≥5000MΩ
VSWR	≤1.30

Material and Plating

Body	Brass, gold/nickel plated or stainless steel passivated
Male center contacts	Brass, gold plated
Female center contacts	Beryllium copper, gold plated
Insulators	PTFE
Crimp ferrules	Copper alloy, nickel plated

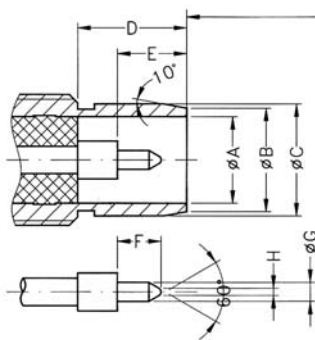
Mechanical Characteristics

Durability	500 cycles
------------	------------

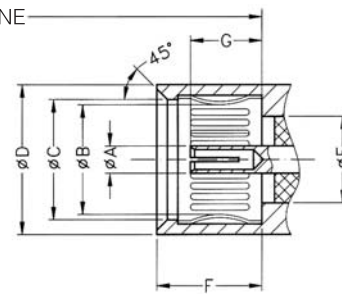
INTERFACE MATING DIMENSIONS

Letter	PLUG(mm)	
	Minimum	Maximum
A	4.06	4.10
B	4.88	—
C	5.31	5.36
D	5.06	—
E	3.25	3.35
F	2.16	2.41
G	0.90	0.94
H	—	0.25

Letter	JACK(mm)	
	Mnimum	Maximum
A	1.78	—
B	—	—
C	5.27	—
D	7.37	—
E	4.06	4.10
F	—	5.03
G	3.05	3.23



REFERENCE PLANE

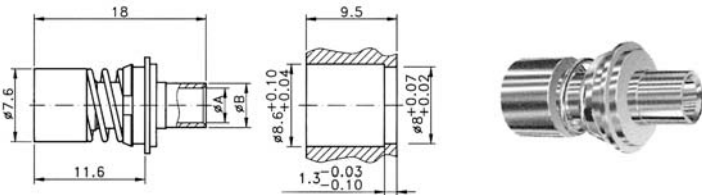


PLUG

JACK

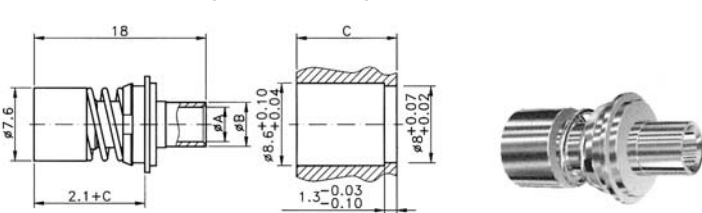
Semi-Rigid, Semi-Flexible Cable Connectors

Panel Feedthrough Cable Plug, Solder



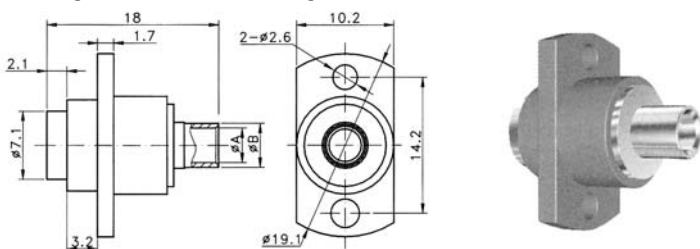
Part Number	Module	Cable Group	Remark
R49050	BMA-(E)KB2	085	A=2.2 B=3.0
R49051	BMA-(E)KB3	141	A=3.6 B=4.6

Panel Feedthrough Cable Plug, Solder



Part Number	Module	Cable Group	Remark
R49052	BMA-(E)KB2A	085	A=2.2 B=3.0 C=11.1
R49053	BMA-(E)KB2B	085	A=2.2 B=3.0 C=12.7
R49054	BMA-(E)KB3A	141	A=3.6 B=4.6 C=11.1
R49055	BMA-(E)KB3B	141	A=3.6 B=4.6 C=12.7

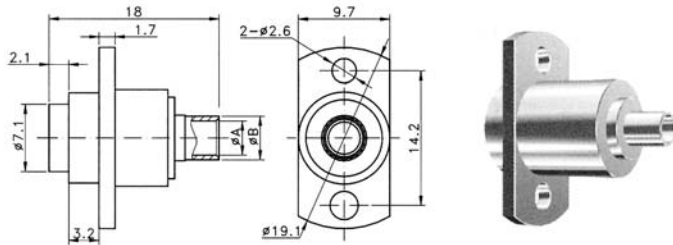
Flange Mount Cable Plug, Solder



Part Number	Module	Cable Group	Remark
R49056	BMA-(E)KFB2	085	A=2.2 B=3.0
R49057	BMA-(E)KFB3	141	A=3.6 B=4.6

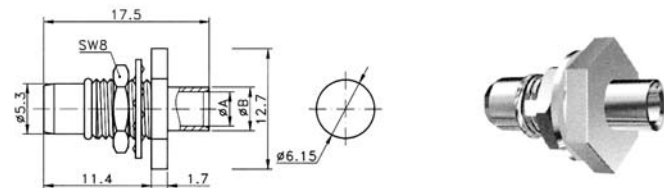
Semi-Rigid, Semi-Flexible Cable Connectors

Flange Mount Cable Plug, Solder



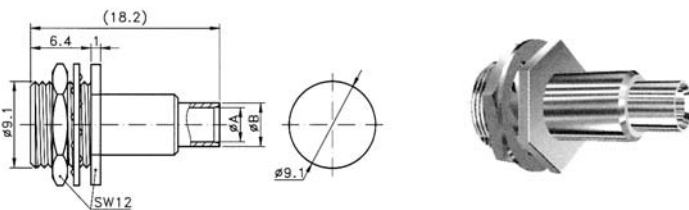
Part Number	Module	Cable Group	Remark
R49058	BMA-(E)KFB2A	085	A=2.2 B=3.2
R49059	BMA-(E)KFB3A	141	A=3.6 B=4.6

Bulkhead Cable Jack, Solder



Part Number	Module	Cable Group	Remark
R49060	BMA-(E)JYB2	085	A=2.2 B=3.2
R49061	BMA-(E)JYB3	141	A=3.6 B=4.6

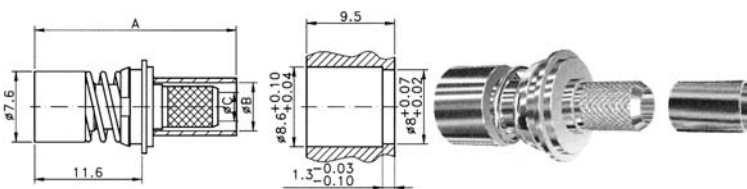
Bulkhead Cable Plug, Solder



Part Number	Module	Cable Group	Remark
R49062	BMA-(E)KYB2	085	A=2.2 B=3.2
R49063	BMA-(E)KYB3	141	A=3.6 B=4.6

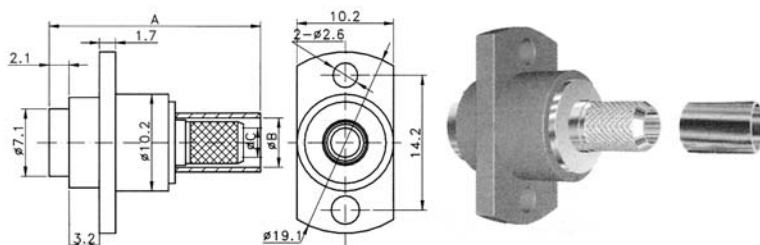
Flexible Cable Connectors

Panel Feedthrough Cable Plug, M02



Part Number	Module	Cable Group	Remark
R49064	BMA-(E)K2.5Y	2.6/50S	A=23.3 B=2.8 C=1.6
R49065	BMA-(E)K2.5DY	2.6/50D	A=23.3 B=3.4 C=1.6
R49066	BMA-(E)K5Y	5/50S	A=22.3 B=5.2 C=3.1
R49067	BMA-(E)K5DY	5/50D	A=28.3 B=5.7 C=3.1

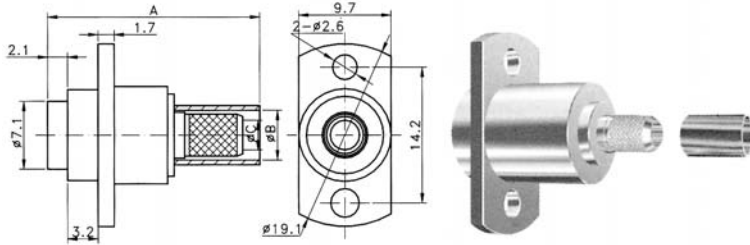
Flange Mount Cable Plug, M02



Part Number	Module	Cable Group	Remark
R49068	BMA-(E)KF2.5Y	2.6/50S	A=24.0 B=2.8 C=1.6
R49069	BMA-(E)KF2.5DY	2.6/50D	A=22.8 B=3.4 C=1.6
R49070	BMA-(E)KF5Y	5/50S	A=21.8 B=5.2 C=3.1
R49071	BMA-(E)KF5DY	5/50D	A=28.3 B=5.7 C=3.1

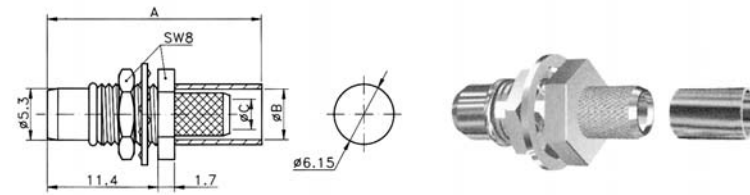
Flexible Cable Connectors

Flange Mount Cable Plug, M02



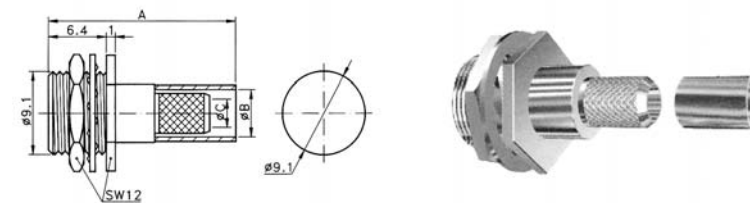
Part Number	Module	Cable Group	Remark
R49072	BMA-(E)KF2.5YA	2.6/50S	A=24.0 B=2.8 C=1.6
R49073	BMA-(E)KF2.5DYA	2.6/50D	A=22.8 B=3.4 C=1.6
R49074	BMA-(E)KF5YA	5/50S	A=21.8 B=5.2 C=3.1
R49075	BMA-(E)KF5DYA	5/50D	A=23.8 B=5.7 C=3.1

Bulkhead Cable Jack, M01



Part Number	Module	Cable Group	Remark
R49076	BMA-(E)JY2.5Y	2.6/50S	A=22.6 B=2.8 C=1.6
R49077	BMA-(E)JY2.5DY	2.6/50D	A=22.6 B=3.4 C=1.6
R49078	BMA-(E)JY5Y	5/50S	A=25.1 B=5.2 C=3.1
R49079	BMA-(E)JY5DY	5/50D	A=28.1 B=5.7 C=3.1

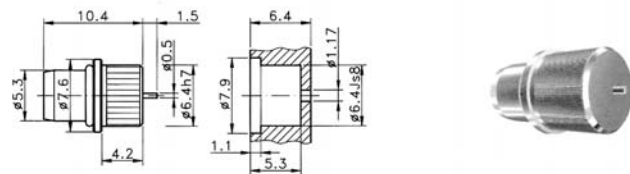
Bulkhead Cable Plug, M02



Part Number	Module	Cable Group	Remark
R49080	BMA-(E)KY2.5Y	2.6/50S	A=22.4 B=2.8 C=1.6
R49081	BMA-(E)KY2.5DY	2.6/50D	A=22.4 B=3.4 C=1.6
R49082	BMA-(E)KY5Y	5/50S	A=24.9 B=5.2 C=3.1
R49083	BMA-(E)KY5DY	5/50D	A=27.9 B=5.7 C=3.1

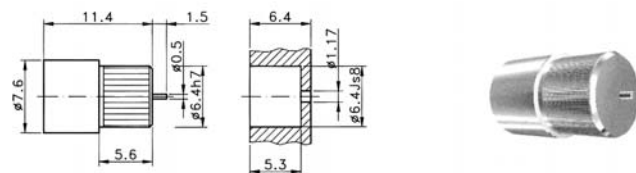
Panel Feedthrough Receptacle

Jack Receptacle, Press-fit Installation



Part Number	Module	Remark
R49084	BMA-(E)JPD	

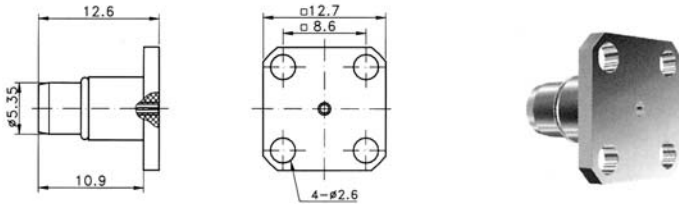
Plug receptacle, Press-fit Installation



Part Number	Module	Remark
R49085	BMA-(E)KPD	

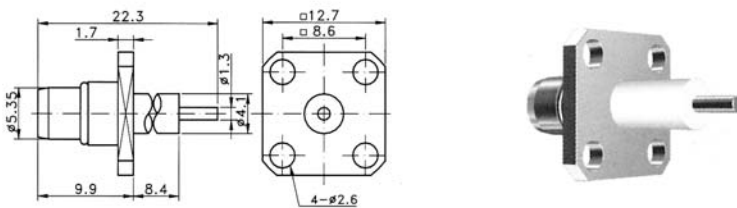
Flange Mount Receptacle

Panel Jack Receptacle, 4 Hole Flange Mount



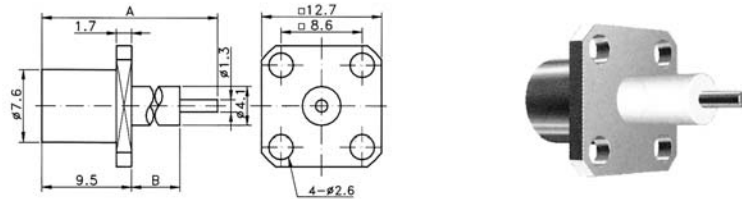
Part Number	Module	Remark
R49086	BMA-(E)JFD	

Panel Jack Receptacle, 4 Hole Flange Mount



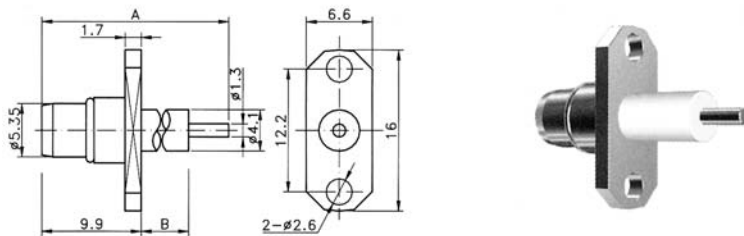
Part Number	Module	Remark
R49087	BMA-(E)JFD1	

Panel Plug Receptacle, 4 Hole Flange Mount



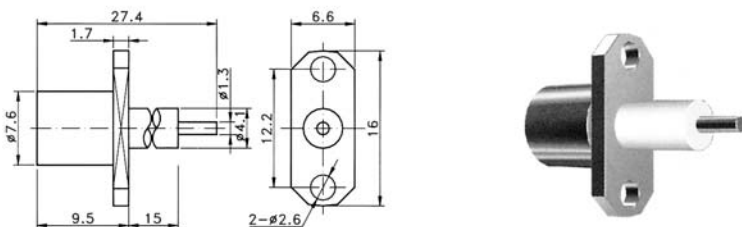
Part Number	Module	Remark
R49088	BMA-(E)KFD1	A=27.4 B=15.0
R49089	BMA-KFD3	A=15.5 B=4.0

Panel Jack Receptacle, 2 Hole Flange Mount



Part Number	Module	Remark
R49090	BMA-(E)JFD2	A=22.3 B=8.4
R49091	BMA-JFD3	A=15.5 B=3.1
R49092	BMA-JFD6	A=15.9 B=3.0
R49093	BMA-JFD7	A=24.9 B=14.4

Panel Jack Receptacle, 2 Hole Flange Mount



Part Number	Module	Remark
R49094	BMA-(E)KFD2	